

Shenzhen HSC Electronics Co.,Ltd

**FA Series**

**Front Service Aluminum LED Display**

Web: [www.hsclcd.com](http://www.hsclcd.com)

Email: [sales@hsclcd.com](mailto:sales@hsclcd.com)

Mobile: +86 198 6770 2730



## Features

1. Low Power Consumption and Energy Saving
2. Flame Resistance
3. IP68 Protection Level
4. High refresh and high brightness
5. Aluminum Material Proposal
6. Front and Rear Maintenance



The back shell is made of die-casting aluminum, which is not easy to ignite, resistant to high temperature, and has fast heat dissipation. The mask is made of V0 standard flame-retardant material, which can work in high temperature environment without spontaneous combustion.

Fully closed die-casting aluminum back shell, protect the components one by one, make the screen body resistant to high temperature, low temperature, corrosion, strong environmental adaptability, outdoor all-weather work, ultra stable and high protection.



Normal operation up to 80 °C

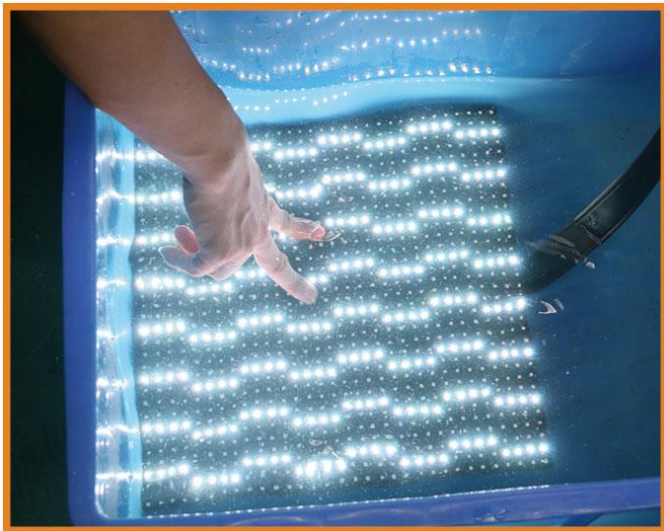


Normal operation at - 40 °C minimum



Able to operate normally in seaside environment for a long time

The aluminum back shell adopts the fully closed design, equipped with a three in one waterproof plug, and the lamp foot adopts the double liquid glue filling technology, with full waterproof IP68.



waterproof test



Fully enclosed components



3 in 1 waterproof plug



The lamp foot is filled with double liquid glue



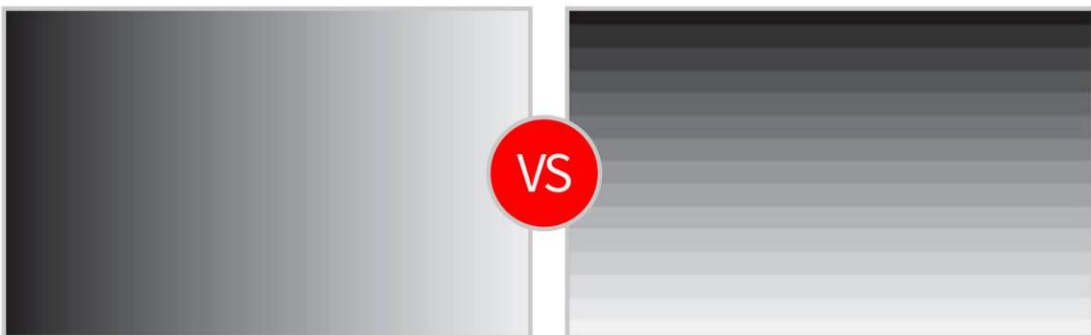
我司产品灰度

普通产品灰度



阴影中的纹理处理清晰

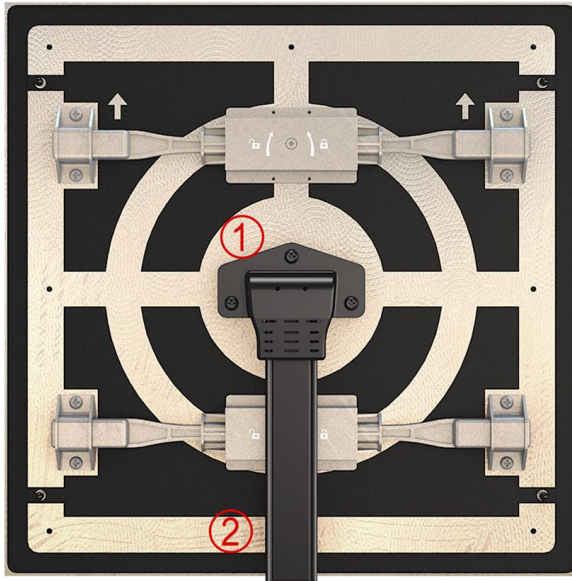
阴影中的细节失真



灰度过渡平滑

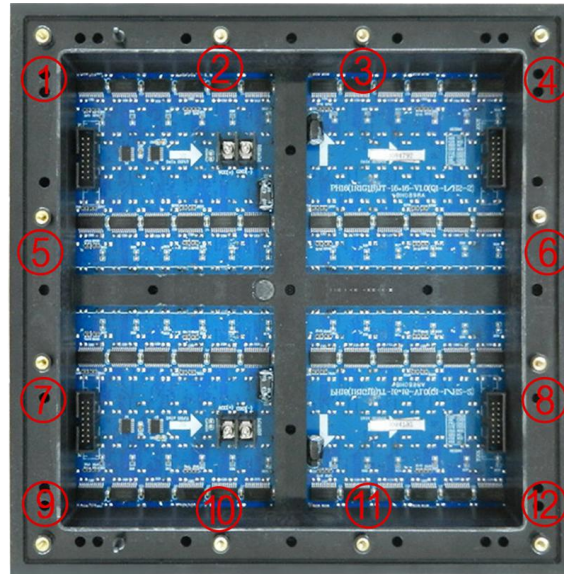
灰度过渡不平滑

Cold light source has high brightness, ultra-high refresh, elimination of ghosting and no tailing, the picture is more fresh and delicate, high fidelity, meeting the requirements of high visual quality for commercial use; RGB deep gray processing, rich and delicate colors, clear and natural picture.



aluminum back shell mudule

**PK**



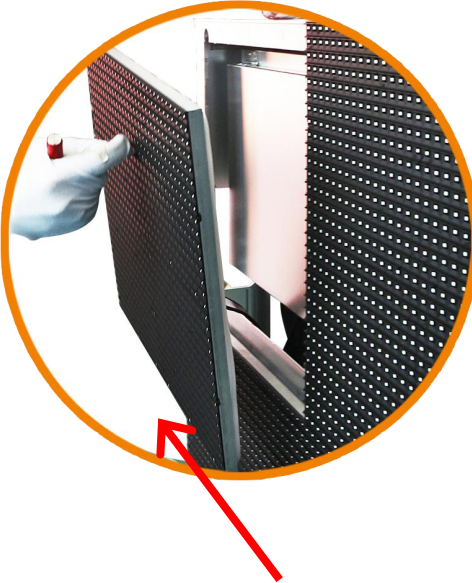
Plastic back shell module

1. Time & cost saving with less screws
2. The fully enclosed package design of aluminum bottom shell protects the components one by one, making the life of the screen body 2-5 times longer than that of the ordinary screen, thus saving maintenance and repair costs.

Front Maintenance:



Insert the upper and lower unlocking tools into the front maintenance hole, and rotate 90 degrees to the left to unlock.



Remove the module with t-tool



Open the power box lock by hand



After opening, the internal accessories of power box can be maintained



Back maintenance:



Open the external power box quick lock    Open the internal power box latch    Maintenance power box internal accessories

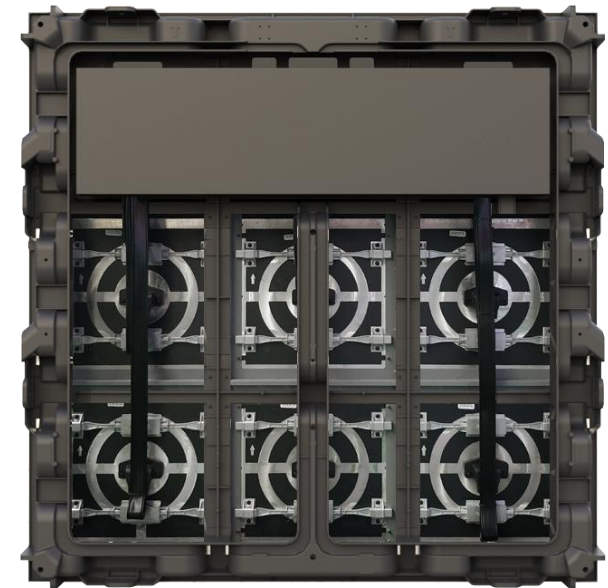
Three cabinet options:



iron cabinet



aluminum cabinet



Die-casting aluminum cabinet

Various specifications are available:



960\*960\*100(mm)



640\*960\*100(mm)



640\*640\*100(mm)



960\*640\*100(mm)

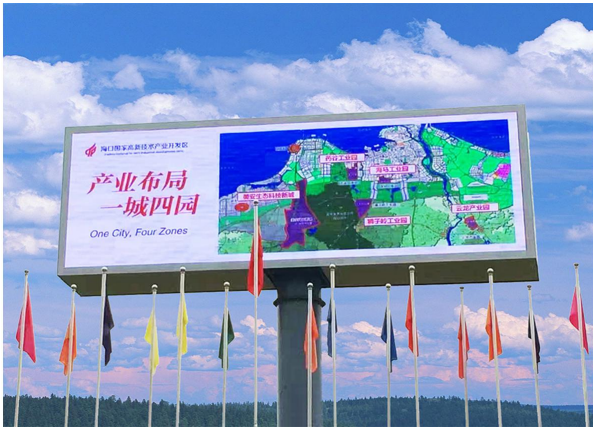
## FA series standard configuration scheme

No	Project	technical parameter		
		FA66	FA8	FA10
1	Model	FA66	FA8	FA10
2	Pixel pitch	6.67mm	8mm	10mm
3	standard cabinet size	960*960*100 (Customizable)	960*960*100 (Customizable)	960*960*100 (Customizable)
5	Brightness	5000cd/m <sup>2</sup>	4900cd/m <sup>2</sup>	6000cd/m <sup>2</sup>
6	View angel (Horizontal / vertical)	140°/120°	140°/120°	140°/120°
7	Best viewing distance	7-100m	8-100m	10-100m
8	Gray scale	Within 65536 gray level	Within 65536 gray level	Within 65536 gray level
9	Refresh rate	≥1920Hz	≥1920Hz	≥1920Hz
10	Number of modules per square meter	9.7	9.7	9.7
11	Continuous working time	>24 (Hrs)	>24 (Hrs)	>24 (Hrs)
12	Screen lifespan	>100,000 (Hrs)	>100,000 (Hrs)	>100,000 (Hrs)
13	Maximum power consumption	850W/m <sup>2</sup>	750W/m <sup>2</sup>	900W/m <sup>2</sup>
14	Average power consumption	285W/m <sup>2</sup>	250W/m <sup>2</sup>	300W/m <sup>2</sup>
15	Degree of protection	IP66 /IP68	IP66 /IP68	IP66 /IP68

## Wide range of applications

Such as: all kinds of building exterior wall advertisement, airport, station advertisement, government culture square, highway vertical advertisement, etc.

Municipal Engineering and traffic guidance cases:



Gymnasium application:

