

Shenzhen HSC Electronics Co.,Ltd

Indoor and Outdoor Interactive LED Dance Floor



Web: www.hsclcd.com; Email: sales@hsclcd.com

Part 1-Advantages



CORE ADVANTAGES

- Research and development of multiterm patent technology



The most competitive advanced products

- Professional and efficient operation team



Middle and high grade products

- Complete supply chain management system



Professional after-sales service team



High cost performance of the same grade products



Diversified cooperation model

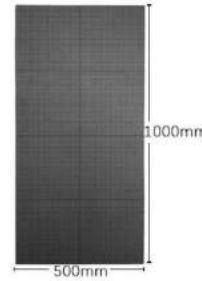


P 2.97 | P 3.91 | P 4.81 | P 5.2 | P6.25 STEEL CABINET

Product characteristics-Indoor

- The waterproof level of steel cabinet is IP66. Products must be finished waterproof test before delivery.
- Luminance can be adjusted in different environment.
- High refresh rate achieves perfect visual effect.
- The uvioresistant mask can keep original colour with solar radiation.
- The thickness of steel cabinet is 80mm and the supporting feet can be adjusted from 130mm to 160mm.

Product detail



Front



Back



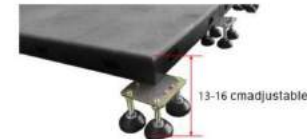
Cabinet position

Product Specifications

	pixel pitch	resolution	LED lamp	luminance	module resolution	module size	cabinet weight	power
P2.976	2.976mm	112896m ²	SMD1415	1800/2800	84*84dot	250*250mm	25kg	400/800w
P3.91	P3.91mm	65536m ²	SMD1921	1800/2500	64*64dot	250*250mm	25kg	400/800w
P4.81	P4.81mm	43264m ²	SMD1921	1800/2300	52*52dot	250*250mm	25kg	400/800w
P5.2	P5.2mm	36864m ²	SMD1921	1800/2200	48*48dot	250*250mm	25kg	400/800w
P6.25	P6.25mm	25600m ²	SMD1921	1800/2200	40*40dot	250*250mm	25kg	400/800w



Supporting feet



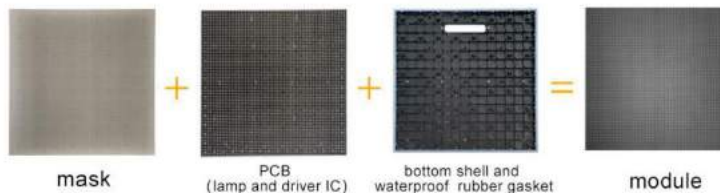
Height adjustment



STEEL CABINET



Module structure



Basic parts



Web: www.hsclcd.com; Email: sales@hsclcd.com

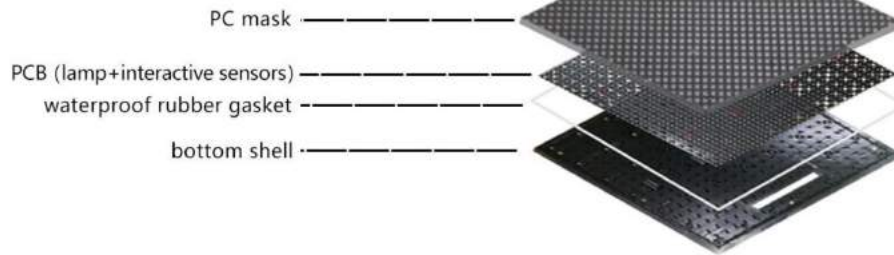


PRODUCT DETAILS

Product performance

1. The mask is made of high-density alkaline PC material, and the surface is treated with frosting technology, which is non-slip and anti-glare.
2. The professional anti-scratch mask design can make the LED floor screen long-term use.
3. Adopt advanced glue filling technology and waterproof rubber gaskets to perfectly realize dustproof, shockproof and waterproof.
4. Anti-UV technology, it can still maintain the original color even after years of sunlight.
5. The ink color of the module mask is consistent which makes no color difference from any angle.

Module details



Notes

- ⚠️ Avoid direct contact between floor tiles and chemical substances (such as alcohol, sulfuric acid, thinner, etc.).
- ⚠️ The LED floor screen should be avoided to directly contact with concrete floor.
- ⚠️ Do not use sharp objects to hit LED floor screen (such as steel bars, iron bars, etc.).
- ⚠️ Clean the LED floor screen with a sponge or soft cloth with clean water (if stains can be cleaned with neutral detergent, wipe with clean water afterwards).



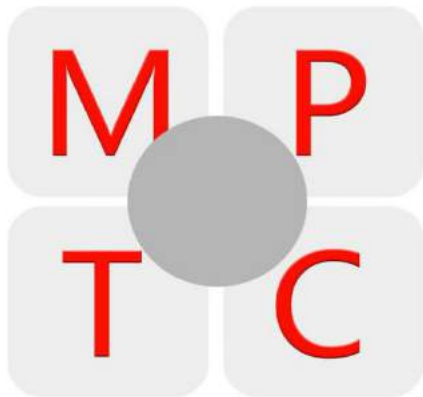
ADVANTAGES

Mask advantage

Numerical control CNC one-time molding, surface fire pattern road, wear-resistant scratch-resistant private mold patent design, truly seamless splicing, high accuracy

Team advantage

We have a professional team engaged in LED industry R&D, production and sales more than 15 years. Our team is able to accurately grasp the market and product design requirements and provide accurate market solutions



Product advantage

There are currently five newly developed models: P2.976/3.91/P4.81/5.2/P6.25, which have passed the testing and certification of a number of authoritative organizations and are standardized and large-scale products

Cooperation advantage

Provide a diversified cooperation model according to the actual situation of the customer. Make a reasonable planning and design as far as possible to help customers achieve the maximum benefit of the product



LOADING WEIGHT TEST



Dingli display technology independently innovate, research and develop interactive LED floor screen technology. The company has passed a variety of authoritative certifications and tests. The market segmented by LED interactive floor screens has shown a huge market trend in recent years. The new interactive LED floor screens with high performance, convenient installation, high load-bearing, waterproof and anti-skid, direct treading, car rolling, high heels, etc., long service life, environmental adaptability and other characteristics and performance, have been widely used in the field of smart display.

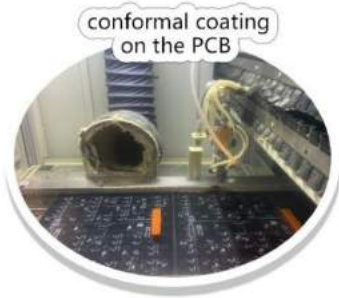
Web: www.hsclcd.com; Email: sales@hsclcd.com



WATERPROOF TEST

High protection level IP68 / IP66

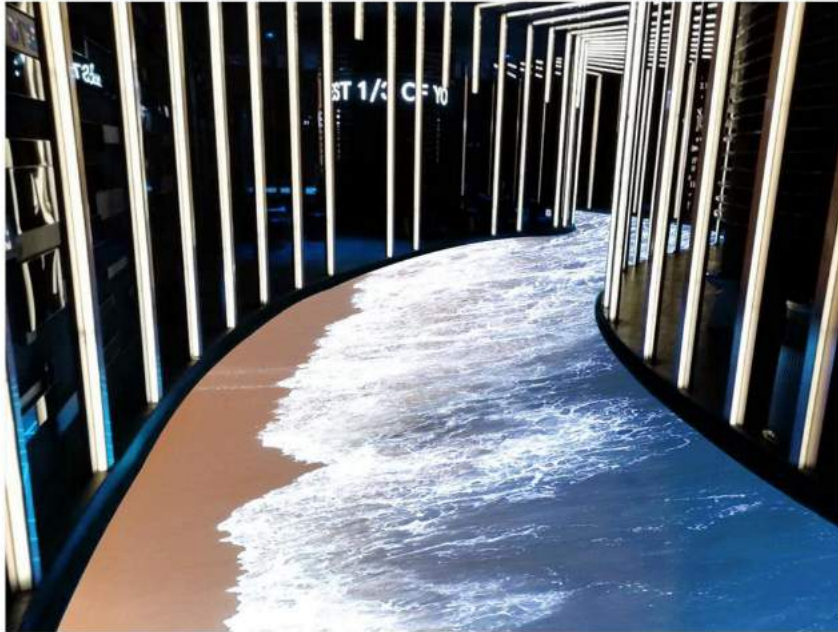
- There are no screw holes on the surface of the mask, which makes the picture more clear and complete.
- The advanced glue filling technology is used for PCB and the surrounding area of the module and the waterproof rubber ring, which can cope with indoor and outdoor places.



Part 4-Applications



APPLICATION RANGE



Bar S-shaped passage

**online celebrity
clock in landmark**

Web: www.hsclcd.com; Email: sales@hsclcd.com



APPLICATION RANGE



Shopping mall

Web: www.hsclcd.com; Email: sales@hsclcd.com



APPLICATION RANGE



**Science and
technology museum**



Bus station



Garden

Web: www.hsclcd.com; Email: sales@hsclcd.com



APPLICATION RANGE

Products cover commercial real estate, tourist attractions, fashion, automobile transportation, financial services, hospitals, education industry, hotels, restaurants, theme parks, cultural venues, sports events, cinemas, exhibition halls, science and technology museums, planning halls, museums, KTV, bars , exhibitions, weddings, squares, evening parties, corporate exhibitions, stage art and other industries.



Web: www.hsclcd.com; Email: sales@hsclcd.com

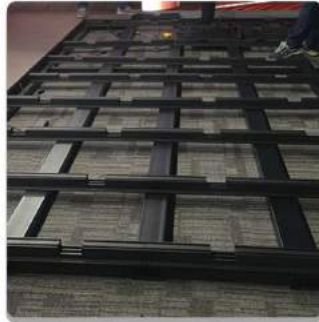
Part 5-Installation & Maintenance



Supporting rail installation



Steel struction



Install suporting rails



Install cabinet

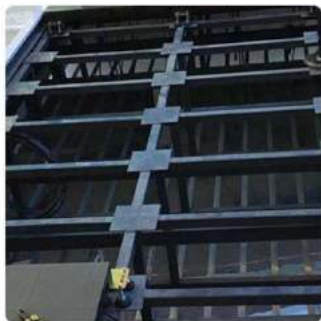


Debug floor screen



INSTALLATION

Supporting feet installation



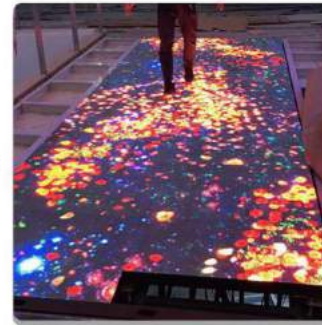
Steel struction



Place supporting feet



Install cabinet



Debug floor screen



MAINTENANCE

Vacuum module maintenance



Handle maintenance

