

*HSC LED*

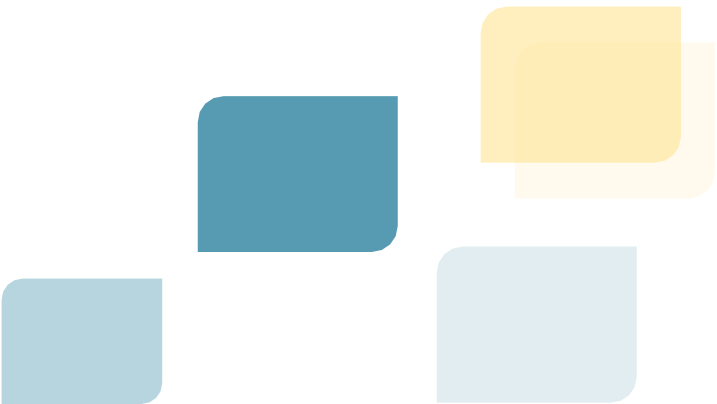
Shenzhen HSC Electronics Co., Ltd

Car Rear Window Transparent LED Screen

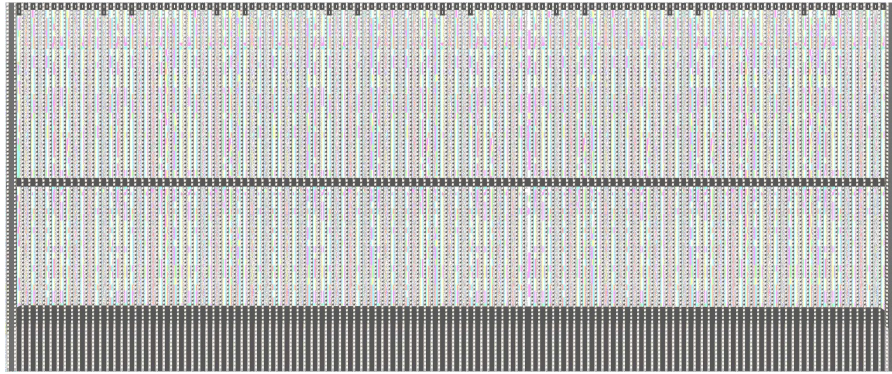
Web: [www.hsclcd.com](http://www.hsclcd.com)

Mobile: +86 198 6770 2730

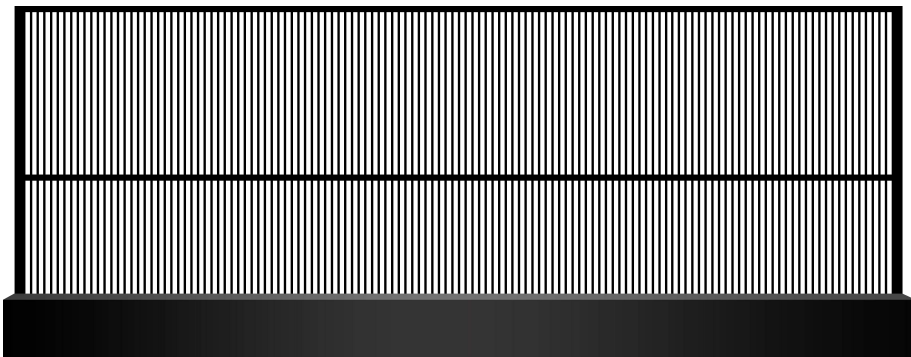
Email: [sales@hsclcd.com](mailto:sales@hsclcd.com)



# Special Design



Front

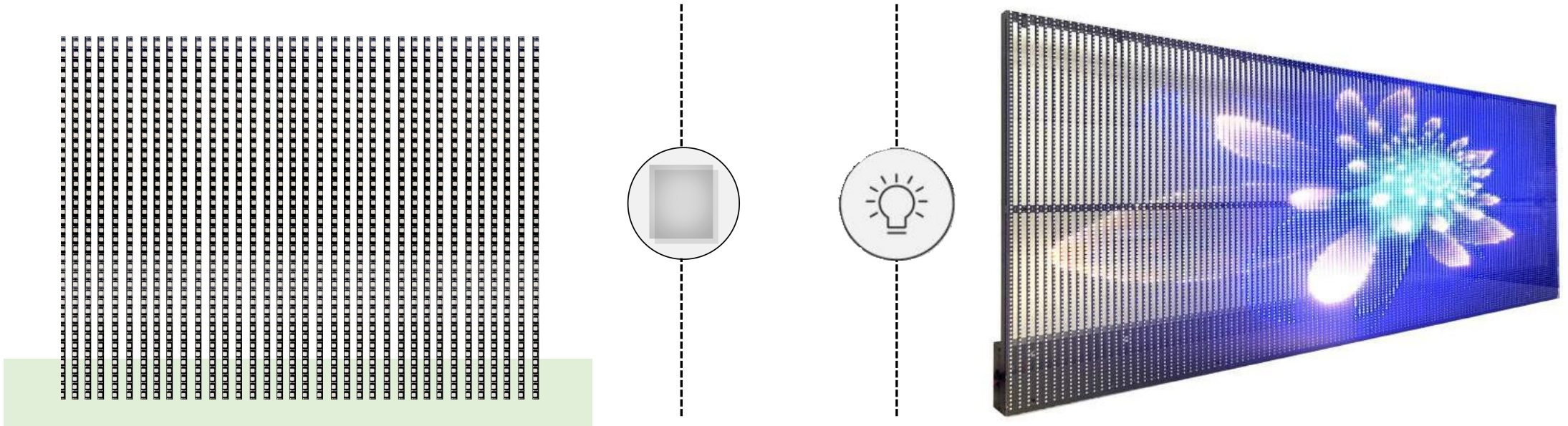


Back



# 01 High Transparency & Brightness

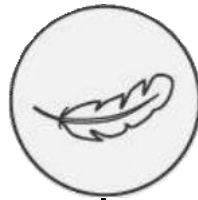
70% high transparency like a real curtain. 5000nits high brightness, even under direct sunlight screen can be visible



## 02 Ultra-slim & Ultra-light



Thickness: 30mm



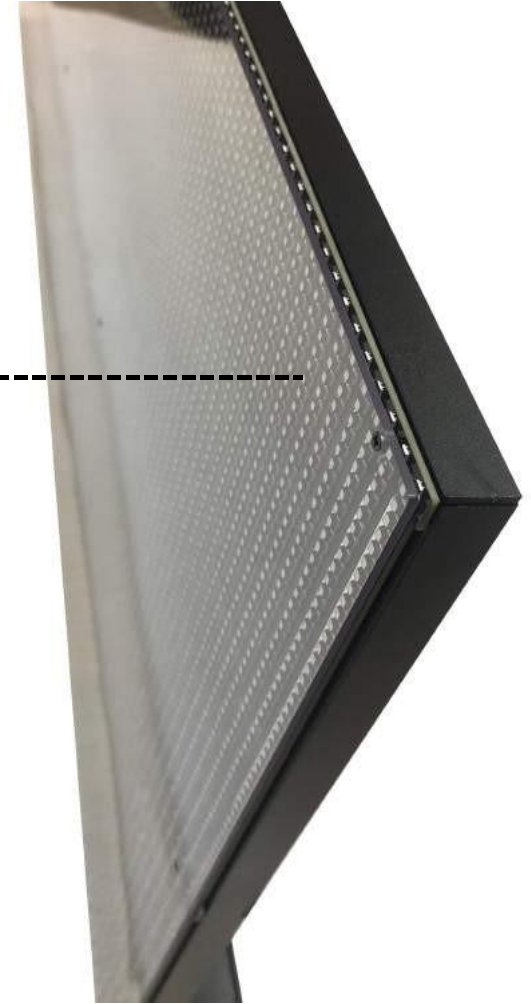
Weight : 1.5kg

## 03 Surface Protection



Acrylic panel

Stronger cover



## 04 Lower Power Consumption



Avg power consumption only 110W

## 05 Multiple Control Mothed

1. WiFi/USB
2. 4G Wireless



# 06 Project Case





## 07 Technical Specification

	2.6-5.2mm	2.6-5.2mm
SMD	SMD1921	SMD1921
Driving Method	1/16 scan	1/16 scan
Cabinet size (W*H)	750×250mm	875×291mm
Cabinet resolution	144×96 Pixel	168×112 Pixel
Cabinet materials	Section aluminum	Section aluminum
Brightness	>4500nits	>4500nits
Viewing angle	H: 140°, V: 140°	H: 140°, V: 140°
Best viewing distance	2.5-50m	2.5-50m
Input voltage	DC12-36V/15A	DC12-36V/15A
Power consumption(Max/Avg)	120/30W/set	150/40W/set
Screen weight	1.5 kg	2.5 kg
Life span	≥100,000 hours	≥100,000 hours
Protection grade	IP43	IP43
Humidity(RH)	10%-85%RH	10%-85%RH
Control System	4G/WIFI/Network	4G/WIFI/Network